



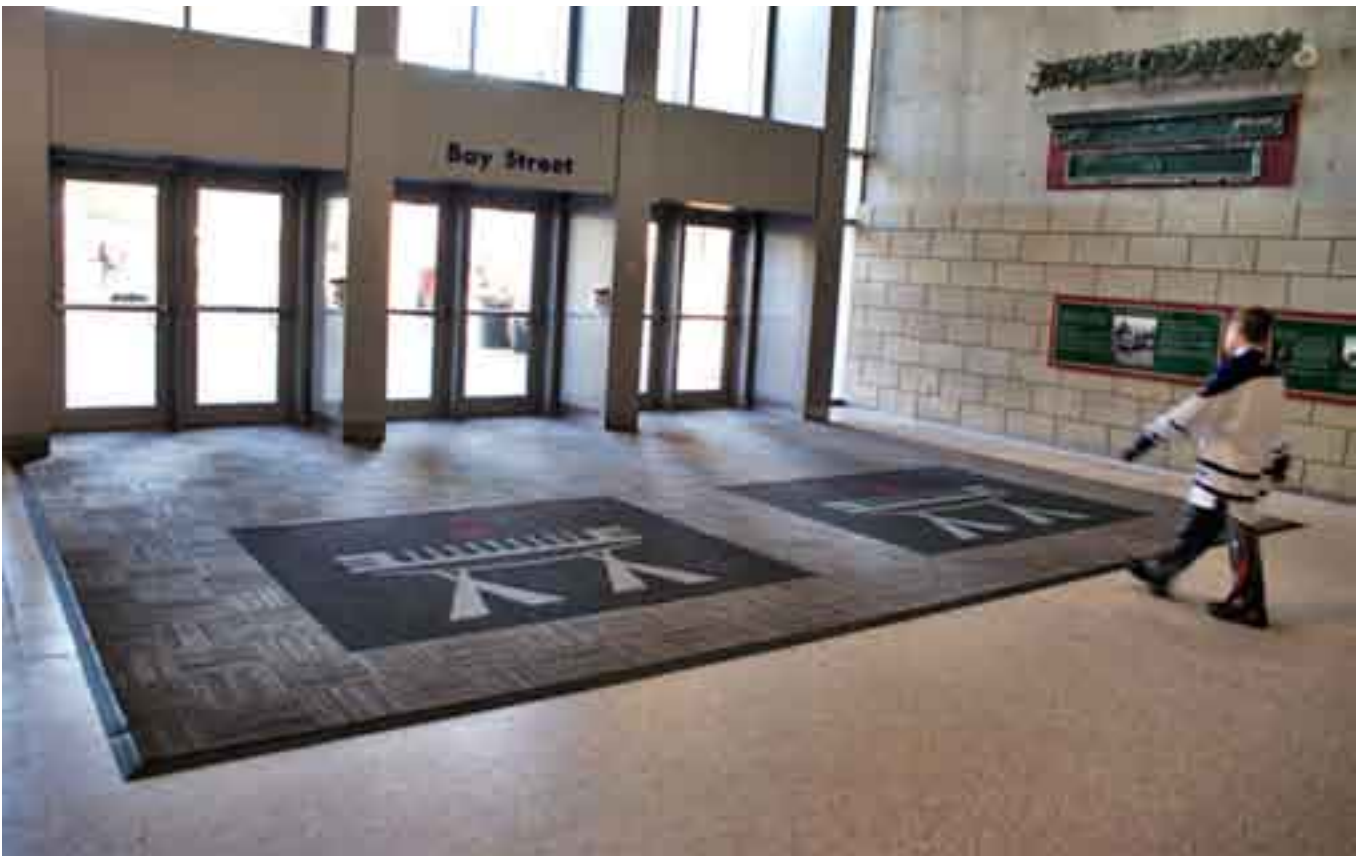
TREADTILE

RECYCLED TIRE TILE



100% Recycled Carpet Tiles





Treadtile FOSSIL BROWN

100% RECYCLED ECO FRIENDLY PRODUCT

- Made from recycled tires, using state-of-the-art recycling technology
- Low maintenance and durable
- Slip-resistant rubber surface with ribbed construction
- Comfortable to walk on, sturdy enough to withstand the heaviest wear
- Treadtile tiles offer both durability and rugged good looks

With Treadtile tiles, what's good for the environment is also good for the most challenging indoor applications. In fact, this durable, slip-resistant flooring meets ADA recommendations for ramps, making it ideal for foyers, exercise facilities and stairways.

MAY CONTRIBUTE TO LEED CI AND NC CREDITS MR 4.2, MR 4.1, MR 5.1, MR 5.2.



The rugged brushed nylon surface is a mixture of earth tones that complement practically any design scheme. Treadtile tiles can also be used to create herringbone patterns, standard or diagonal parquets, large geometric grids, and countless other designs.

Treadtile tiles can be specified for covered exterior installations where the weather can take its toll on flooring. Even when soaking wet, Treadtile tiles retain their skid-resistant properties to provide sure footing in the worst conditions.



SPECIFICATIONS

Product Definition	Heavy duty entrance flooring tiles
Description	
Material	100 % Recycled rubber tire and belt material with reinforcement
Surface Aspect	Buffed, chenille-like nylon
Primary Backing	Non-flammable solid adhesive base
Thickness	3/8" (305 x 305 mm)
Tile Size	12" x 12" (305 x 305 mm)
Weight	2 lbs / sq ft (9.88 kg/m ²)
Warranty	Limited Lifetime

www.williamkempff.com

TECHNICAL SPECIFICATIONS

Coefficient of Friction (Slip resistance)	Dry >1, Wet 0.98 (per ASTM F1677). Exceeds ADA recommended ratings of .60 for flat surfaces and .80 for ramps
Radiant Panel (Flammability)	Radiant Panel, M3 (per NFP 92-506)
Abrasion Resistance	Wear index , 1/g = 53.9
Tensile Strength	Longitudinal >1500 psi

Chemical Resistance	
Acetic Acid 30%	Good
Butyl Alcohol	Good
Chromic Acid (dilute)	Good
Detergents	Good
Petroleum products	Not resistant
Hydrogen peroxide	Good
Nitric Acid	Not resistant
Sodium Hydroxide	Good
Sulfuric Acid (dilute)	Good



William F. Kempf & Son Inc
900 Ashland Avenue
Folcroft, Pa 19032

Phone: 610-532-2000 • Fax: 610-534-3777
email: info@williamkempff.com

